

## Further Information

Department of Conservation  
[www.doc.govt.nz](http://www.doc.govt.nz)

Kiwis for Kiwi  
[www.kiwisforkiwi.org](http://www.kiwisforkiwi.org)

Kiwi Coast  
[www.kiwicoast.org.nz](http://www.kiwicoast.org.nz)

Northland Regional Council  
[www.nrc.govt.nz](http://www.nrc.govt.nz)



**Armourguard**

7B First Ave, Avenues, Whangarei 0110  
Phone: (09) 438 1637  
[www.armourguard.co.nz](http://www.armourguard.co.nz)



**Kaipara District Council**

6 Molesworth Dr, Kaipara, Mangawhai 0505  
Phone: 09 430 4200 Toll Free: 0800 727 059  
[www.kaipara.govt.nz](http://www.kaipara.govt.nz)



**Whangarei District Council**

Private Bag 9023, Whangarei 0148  
Forum North, Rust Avenue, Whangarei  
Phone: 09 430 4200 Facsimile: 09 438 7632  
Toll Free: 0800 WDC INFO (0800 932 463)  
Email: [mailroom@wdc.govt.nz](mailto:mailroom@wdc.govt.nz)  
Website: [www.wdc.govt.nz](http://www.wdc.govt.nz)



## Did you know that the biggest threat to adult kiwi is from dogs?

Kiwi are very easily crushed, as they lack a sternum and have weak chest muscles. They also have a very strong smell, which makes them interesting to dogs and easy to track.

# Responsible dog owners saving kiwi

[www.kaipara.govt.nz](http://www.kaipara.govt.nz)  
[www.wdc.govt.nz](http://www.wdc.govt.nz)

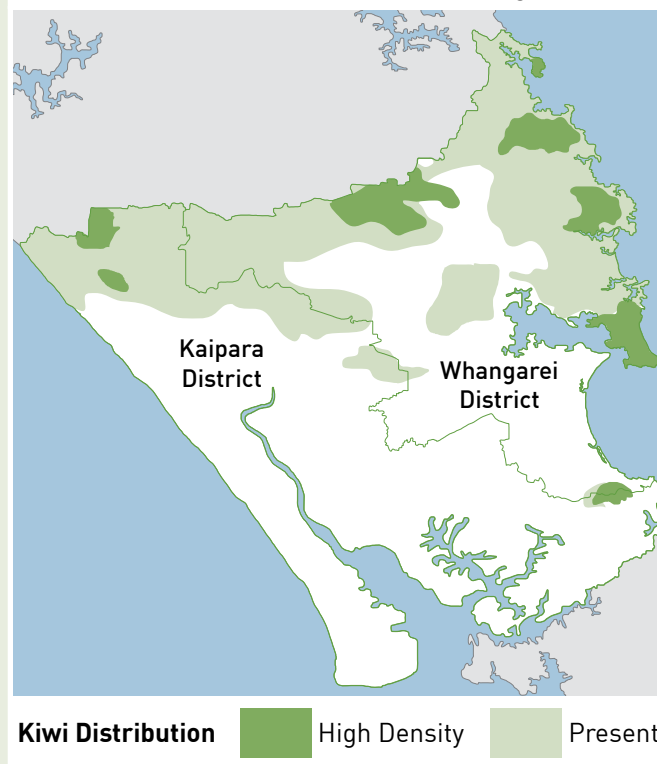
As a responsible dog owner you are an important ally in helping save Northland kiwi.

You can help protect your kiwi by:

- Taking your dog to an approved dog exercise area for some off-lead fun. There are lots of these around, including dog parks, beaches and reserves. You can find these on your local council website [www.wdc.govt.nz](http://www.wdc.govt.nz) and [www.kaipara.govt.nz](http://www.kaipara.govt.nz)
- If you aren't in an approved exercise area and you are out walking with your dog, please keep it on a lead.
- Keep your dog in an enclosed area to keep it from wandering when it is at home.
- If you have working or hunting dogs you can sign up to put your dogs through kiwi aversion training. This will help them to recognise kiwi are off limits. Contact your local DOC office for details.
- If you no longer want your pet, or are unable to care for them, please find them new homes or take them to an animal management facility.
- Register your dogs and have them de-sexed if you don't intend to breed from them.



**Kiwi that have been killed by dogs**



Northland brown kiwi live in some surprising places! They prefer damp gullies in native forest and dense shrubland, but they are also found in forestry blocks, rough pastures, and around wetlands. You might even find one on the edges of our roads.

Kiwi populations in Northland have declined greatly due to predation. The good news is that thanks to the efforts of our communities doing predator control, managed populations of Northland brown kiwi are increasing.

You can check out all the good work being done in your area and how you can get involved on the Kiwi Coast website [www.kiwicoast.org.nz](http://www.kiwicoast.org.nz) or by contacting your local DOC office.

Pet free subdivisions are becoming more common in Northland, particularly in the Whangarei District. Dog and cat free subdivisions are created primarily to help protect kiwi and other native animals. If you think pet free conditions in such areas are not being complied with, identify the likely property and contact Armourguard or your council.



If you see a stray or wandering dog, please report it to Armourguard straight away on **09 438 7513**